



MONTHLY MEMBERSHIP PROGRESS REPORT

District 13 OH4

Results as of: 05/31/2018

GMT: CINDY GREGG

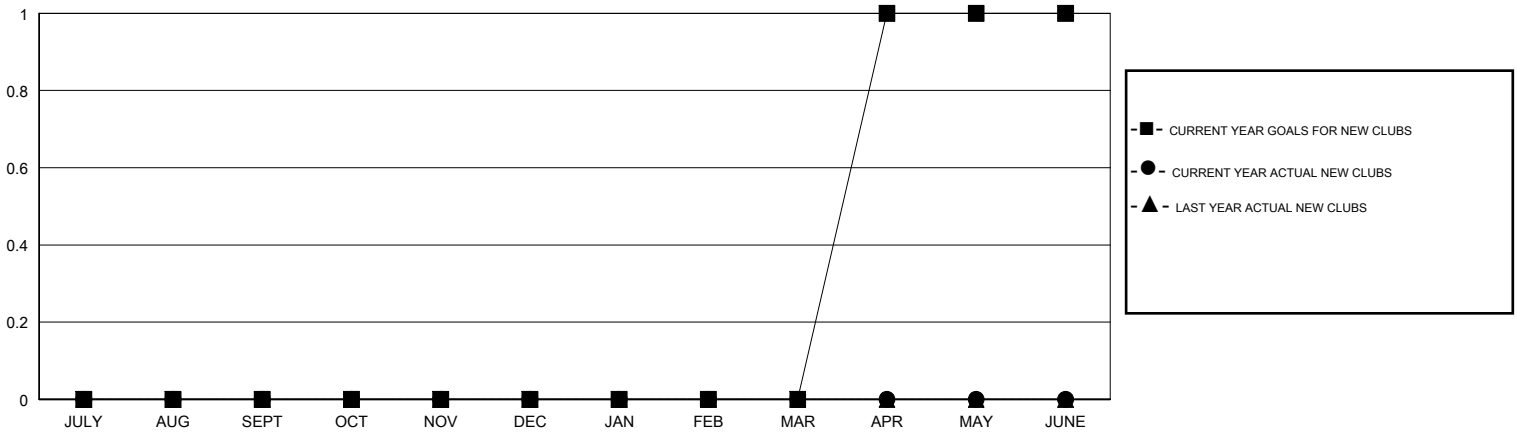
LOCATION OHIO

GMT CA

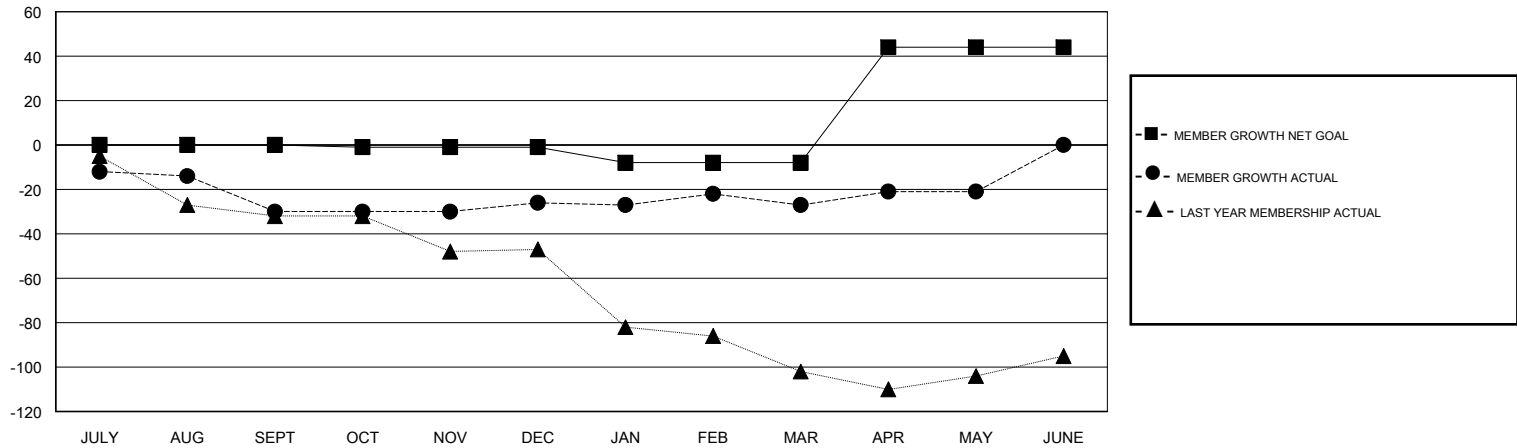
Clubs			
RESULTS FOR 2017-2018			
QUARTER	NEW CLUB GOAL	NEW CLUBS	DROPPED CLUBS
JULY/AUG/SEPT	0	0	0
OCT/NOV/DEC	0	0	0
JAN/FEB/MAR	0	0	0
APR/MAY/JUNE	1	0	0

Members			
RESULTS FOR 2017-2018			
QUARTER	MEMBER GROWTH NET GOAL	MEMBER GROWTH ACTUAL	DROPPED MEMBERS ACTUAL (including transfers)
JULY/AUG/SEPT	0	23	48
OCT/NOV/DEC	-1	34	29
JAN/FEB/MAR	-7	32	29
APR/MAY/JUNE	52	35	27

GOALS AND ACTUAL NEW CLUBS CUMULATIVE



GOALS AND ACTUAL MEMBERS CUMULATIVE



DROPPED CLUBS: 0	35 CLUBS OF 61 ADDED 1 OR MORE NEW MEMBERS	<u>GENDER DISTRIBUTION</u>	
DROPPED MEMBERS		MALE	1,107 (68.29%)
DECEASED	28	FEMALE	514 (31.71%)
CLUB CANCELLED	0	Women Percentage Fiscal Year Goal: 31%	
OTHER	105	TOTAL FAMILY UNIT MEMBERS	274
TOTAL	133	FAMILY MEMBERS PAYING HALF DUES	140

[CLICK HERE FOR CUMULATIVE MEMBERSHIP DATA](#)